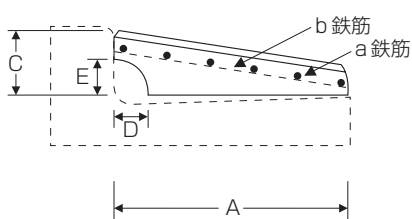
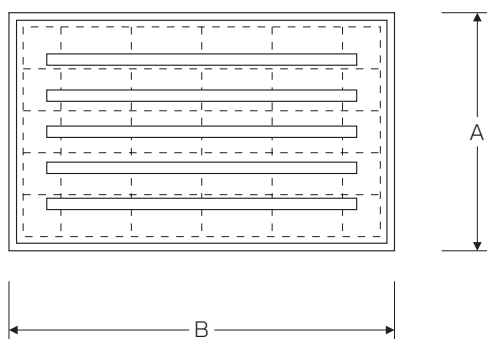
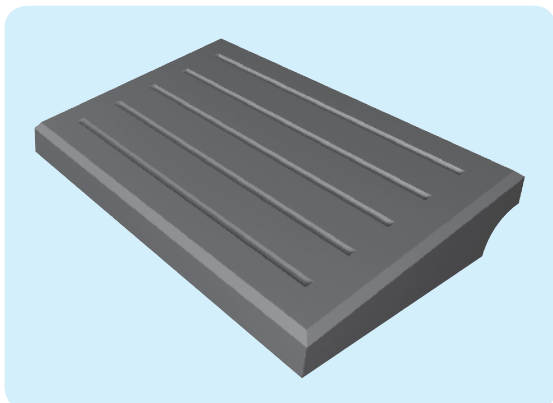
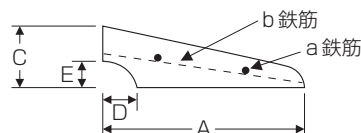
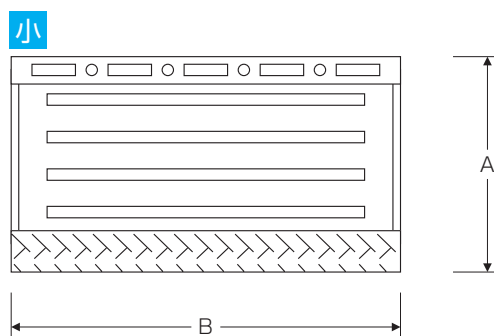
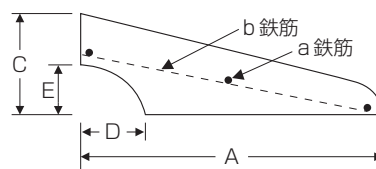
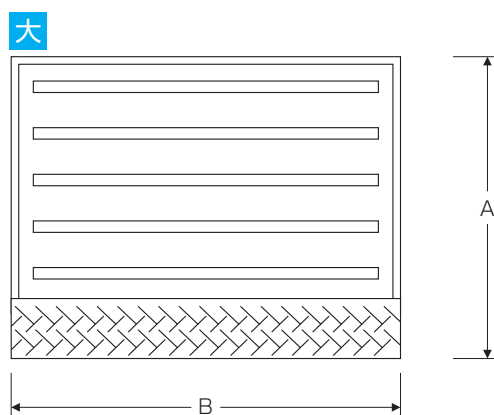
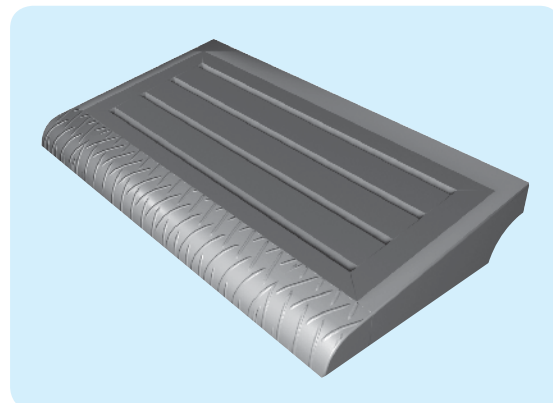


【渡り石】



【フレーム付渡り石】



■仕様寸法表 (単位mm)

名称	A	B	C	D	E	a 鉄筋	b 鉄筋	重量
渡り石	370	600	100	50	50	径4mm 6本	径4mm 7本	36kg
フレーム付渡り石(小)	330	600	90	60	50	径6mm 2本	径6mm 3本	29kg
フレーム付渡り石(大)	460	600	150	110	75	径6mm 3本	径6mm 3本	61kg